



## **La Palma 48, La Palma**

**US\$ 695,000 Asking price**

Buyers Costs

La Palma - 1,733 / 161 sq.ft./m2 - 3 Bedrooms - 2.5 Baths - Swimming Pool

## Real Estate information

Neighborhood	La Palma
Address	La Palma 48
Freehold Land	
Bedrooms	3
Bathrooms	2.5
Parking	
Swimming Pool	
Air Conditioning in bedrooms	
Total living area	1,733 / 161 sq.ft./m2
Total ground area	10,624 / 987 sq.ft./m2
Maintenance status	good



Ground tax (annually): 0.345% of the value (1st residence), or Property tax (annually): 0.91% of the value (2nd residence). Buyers Costs consist of (one-off): 5% transfer tax, approx. 1.5% notary costs and costs of Land Registry at the office of Kadaster depending on purchase price.

Registered at the Land Registry Office Kadaster, number 4-H-491.



## Features

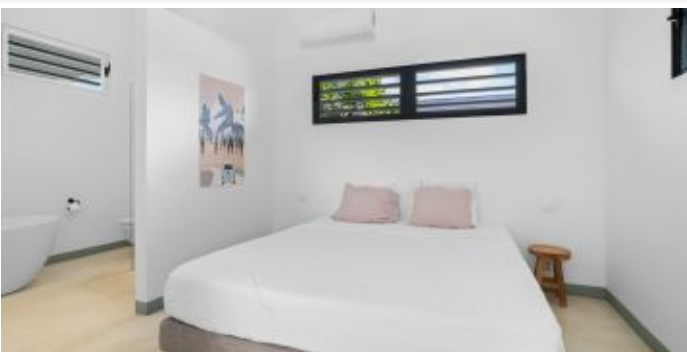
This beautiful detached villa is for sale in the quiet residential area of La Palma. This modern home offers a combination of style, comfort, and luxury, ideal for both permanent living and long-term rental.

Upon entering, you are welcomed into a spacious and light living room with an open kitchen, equipped with modern built-in appliances. The villa features three comfortable bedrooms and two elegantly finished bathrooms. At the rear of the house, there is a large covered terrace where you can peacefully enjoy the Caribbean outdoor lifestyle. The beautifully landscaped backyard offers a stunning private pool and an additional covered area, perfect for a lounge corner.

This villa is located in a quiet area, yet just a short distance from all essential amenities and the most beautiful beaches of Bonaire. If you are looking for a home that combines space, luxury, and the ultimate island feel, contact us for more information or to schedule a viewing.

- beautiful location in the popular La Palma neighborhood,
- living room with an adjoining covered porch,
- wooden roof construction with roof tiles,
- concrete floors throughout the house and covered terrace,
- hardwood and aluminium window frames,
- fully landscaped garden with various plants, (palm)trees, shaded palapa, and finished with white gravel.

Automatic membership of HOA (dormant). Additional aesthetics provisions apply within the La Palma allotment project.





## Lay out

Entrance via living room with open concept kitchen, sliding doors to covered back porch, master bedroom with private bathroom, second bedroom, second bathroom, 3rd bedroom and storage

## Technical specifications

- 110 and 220 volt,
- air conditioning in all bedrooms,
- drip system,
- fiber internet connection,
- magna swimming pool- pump and filter installation.

## Zoning plan

Extract from Ruimtelijk Ontwikkelingsplan Bonaire (zoning plan)

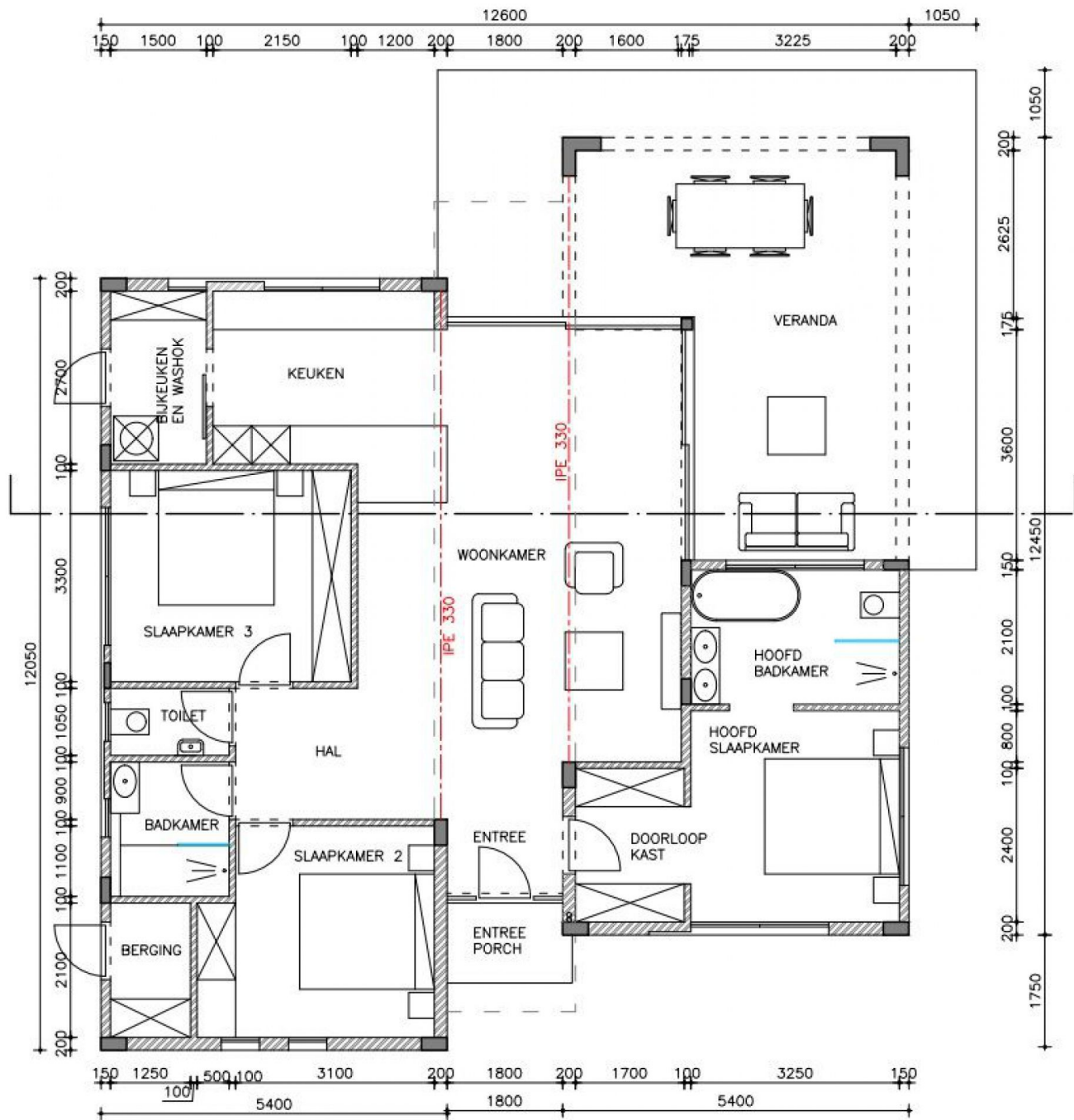
Link to zoning plan map with marker: [Map](#)

Link to zoning description: [Zoning "Woongebied II"](#)









**PLATTEGROND**